



## Vestil Manufacturing Co.

2999 North Wayne Street, P.O. Box 507, Angola, IN 46703

Telephone: (260) 665-7586 -or- Toll Free (800) 348-0868

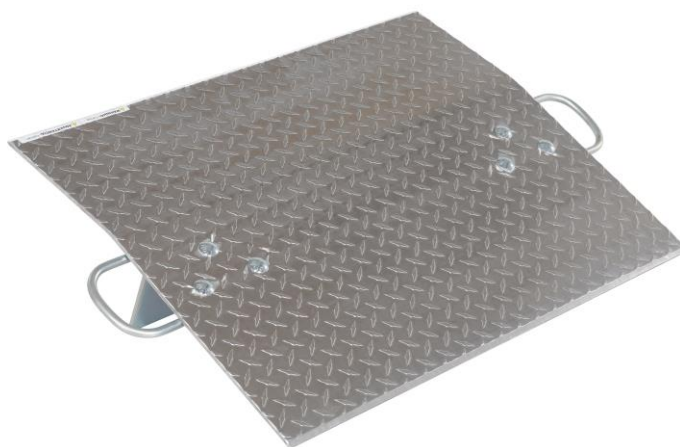
Fax: (260) 665-1339

Web: [www.vestil.com](http://www.vestil.com) e-mail: [info@vestil.com](mailto:info@vestil.com)

# ALUMINUM DOCK PLATES

## A-SERIES, AH-SERIES

## E-SERIES, EH-SERIES



### Receiving Instructions

After delivery, remove the packaging from the product. Inspect the product closely to determine whether it sustained damage during transport. If damage is discovered, record a complete description of it on the bill of lading. If the product is undamaged, discard the packaging.

**NOTE:** The end-user is solely responsible for confirming that product design, use, and maintenance comply with laws, regulations, codes, and mandatory standards applied where the product is used.

### Technical Service & Replacement Parts

For answers to questions not addressed in these instructions and to order replacement parts, labels, and accessories, call our Technical Service and Parts Department at (260) 665-7586. The Department can also be contacted online at <https://www.vestil.com/page-parts-request.php>.

### Electronic Copies of Instruction Manuals

Additional copies of this instruction manual may be downloaded from <https://www.vestil.com/page-manuals.php>.

Table of Contents		Page
Specifications.....		2
Signal Words.....		3
Safety Instructions.....		3
Assembling a Dockplate.....		4
Using a Dockplate.....		4
Positioning and Using Your Dockplate.....		5
Record of Satisfactory Condition.....		6
Inspecting & Maintaining the Dockplate.....		6
Exploded Views and Bills of Materials.....		7, 8, 9
Labeling Diagram.....		10
Limited Warranty.....		11

## I. SPECIFICATIONS

Documents that provide specifications for each model of dockplate are available online to anyone who visits Vestil's website. Specifications include dimensions, net weight, and capacity information. Navigate to <https://www.vestil.com/product.php?FID=31> for A and AH series or <https://www.vestil.com/product.php?FID=32> for E and EH series. Scroll to the Product Specifications Table portion of the page. Find the entry for the dockplate you purchased and click the button in the "PDF" column that looks like a pencil inside a blue-bordered box. A PDF file will open. This file is the specifications document. Print a copy of the document and keep it with your copy of this manual. The following is an exemplar specifications document for model A-3024.

ALUMINUM HAND TRUCK DOCKPLATE - A-3024		APPROX WEIGHT: 30.29 lbs. DOES NOT INCLUDE WEIGHT OF POWER OR PACKAGING!!!	
*** ANY ADDITIONS, DELETIONS, OR OMISSIONS MUST BE CORRECTED ON THIS DRAWING AS THIS DRAWING WILL BE CONSIDERED ALL INCLUSIVE *** ALL GRAPHICS PROVIDED ARE FOR REFERENCE ONLY. IF CERTAIN DIMENSIONS ARE CRITICAL PLEASE VERIFY THOSE DIMENSIONS WITH YOUR SALESPERSON			
<b>STANDARD FEATURES</b> MODEL NUMBER IS A-3024 CAPACITY IS 500 LBS OVERALL WIDTH IS 36" USABLE WIDTH IS 30" OVERALL LENGTH IS 23 27/32" USABLE LENGTH IS 23 27/32" OVERALL HEIGHT IS 6 1/4"		<b>APPROVAL</b> I, THE UNDERSIGNED, AGREE THAT THE PRODUCT AS REPRESENTED SATISFIES DESIGN AND DIMENSION REQUIREMENTS. I ALSO ACKNOWLEDGE MY DUTY TO CONFIRM PRODUCT AND INSTALLATION COMPLIANCE WITH ALL APPLICABLE FEDERAL, STATE AND LOCAL REGULATIONS AND STANDARDS. <b>UNITS REQUIRING APPROVAL DRAWINGS OR MODIFIED ARE NON-RETURNABLE</b> <input type="checkbox"/> As drawn <input type="checkbox"/> As marked Signed: _____ Date: _____ Printed Name: _____ LEAD TIME WILL START UPON RECEIPT OF SIGNED APPROVAL DRAWING	
<b>SPECIAL FEATURES</b> NONE		DISTRIBUTOR'S NAME: VESTIL MANUFACTURING DRAWN BY: TAL    DATE: 05/02/2016    P.O.# X REFERENCE: X    SCALE: 1:10    W.O.# X QUOTED LEAD TIME: X    QUOTE # X    SALES: X    FILE NAME: 12-007-100	

Pounds to kilograms conversion: 2.2LB. = 1KG

Uniform capacity = Maximum evenly distributed weight the dockplate can support.

All models comply with OSHA 1910.26 and ANSI MH30.2 standards for portable dockboards.

## II. SIGNAL WORDS

This manual uses SIGNAL WORDS to indicate the likelihood that a particular action will cause personal injuries or property damage. Signal words also specify the level of seriousness of injury if the product is misused in the ways described. The following signal words are used in this manual.

**⚠ DANGER** Identifies a hazardous situation which, if not avoided, **WILL** result in DEATH or SERIOUS INJURY. Use of this signal word is limited to the most extreme situations.

**⚠ WARNING** Identifies a hazardous situation which, if not avoided, **COULD** result in DEATH or SERIOUS INJURY.

**⚠ CAUTION** Indicates a hazardous situation which, if not avoided, **COULD** result in MINOR or MODERATE injury.

**NOTICE** Identifies practices likely to result in product/property damage, such as operation that might damage the product.

## III. SAFETY INSTRUCTIONS

Vestil strives to identify foreseeable hazards associated with the use of its products. However, no manual can address every conceivable risk. To minimize the likelihood of being injured as a result of using this device, inspect and maintain the product as instructed in INSPECTIONS & MAINTNENANCE and exercise sound judgment whenever using this device.

### ⚠ WARNING

Risks of serious personal injuries or death.

- Read this manual in its entirety before assembling, using, inspecting or servicing the product. A copy of this manual should always be available to any person who assembles, installs, uses, inspects, or maintains this dockplate.
- DO NOT use this dockplate with powered equipment such as fork trucks. It is designed only for foot traffic, hand trucks, or manual pallet jacks (E and EH series).
- DO NOT exceed the maximum rated load.
- Inspect the dockplate as instructed in [INSPECTING & MAINTAINING YOUR DOCKPLATE](#) on p. 6. Remove the dockplate from service if an inspection reveals changes from [SATISFACTORY CONDITION](#). DO NOT use the dockplate until it is restored to satisfactory condition. ONLY use manufacturer-approved replacement parts to repair your dockplate.
- DO NOT use a damaged dockplate. ONLY use a dockplate that is in satisfactory condition. See [RECORD OF SATISFACTORY CONDITION](#) on p. 6; also see [INSPECTING AND MAINTAINING YOUR DOCKPLATE](#) on p. 6.
- ONLY qualified maintenance personnel should maintain and repair this product. An improperly maintained dockplate could become unsafe to use.
- ONLY use a dockplate on compacted, improved surfaces (concrete) that are even and level. This dockplate cannot be used to bridge uneven or sloping surfaces. The dockplate must not wobble or slide during use.
- DO NOT use a dockplate unless all labels are in place, undamaged, and easily readable from a reasonable, safe distance. DO NOT remove or obscure labels.
- DO NOT modify this dockplate in any way. Modifications automatically void the [LIMITED WARRANTY](#) (see p. 11) and might make the dockplate unsafe to use.
- Ensure the dockplate is properly positioned and legs extend into the gap between the dock and the trailer before use. The lip must rest securely on the trailer bed and extending at least 4-6 inches onto both the trailer and the loading dock.
- Comply with OSHA 1910.26 and ANSI MH30.2 standards for portable dockboards.

### NOTICE

Proper use, maintenance, and storage are essential for this product to function properly.

- Always use this product in accordance with the instructions in this manual and consistent with any training relevant to machines, devices, etc. used in conjunction with this product.
- Keep the product clean & dry. Store it in an indoor location.

## IV.A. ASSEMBLING THE DOCKPLATE

Refer to the appropriate *EXPLODED VIEW* for your dockplate. Align the bolt holes in the leg and right leg weldments with the bolt holes in your dockplate. Then, install carriage bolts (part no. 20268) through the bolt holes in the dockplate. Put a lock washer (33626) onto the end of each bolt. Then, securely tighten a hex nut on each bolt.

## IV.B. USING A DOCKPLATE

Personnel with experience loading and unloading trailers should determine the necessary use of dockplates on a case-by-case basis, including the optimal positioning. Compelling reasons to use dockplates include, but are not limited to:

- Bridging gaps between a loading dock & a trailer bed.
- Providing a strong, skid-resistant transition for hand trucks or pallet jacks.
- Enhancing safety during manual material handling operations.

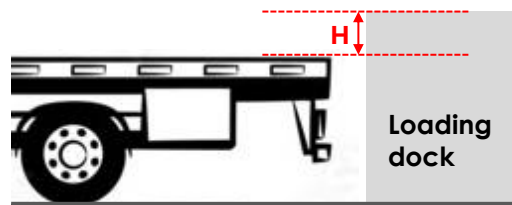
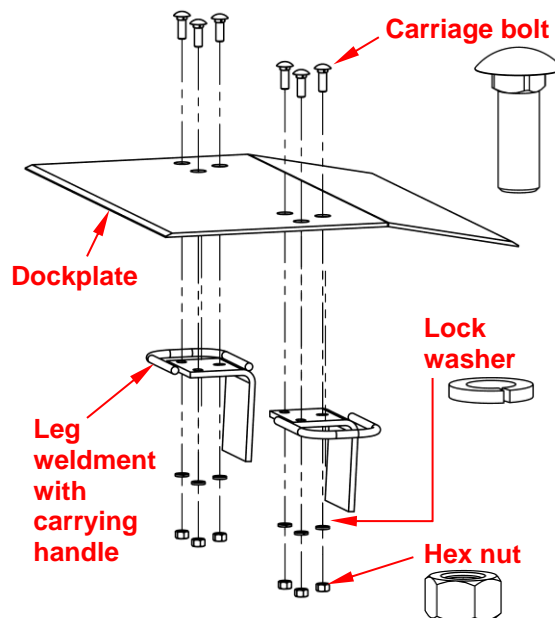
Dockplates are portable and feature two locking “legs” for secure placement. The trailer should be parked at a loading dock with wheels chocked to prevent movement. Dockplates are not designed for powered fork trucks and must not be used with them. NEVER use a dockplate unless it is structurally sound, stable (doesn’t wobble or slide), and both legs extend into the gap between the loading dock and trailer bed.

Before using a dockplate, inspect it as described in the [INSPECTING & MAINTAINING THE DOCKPLATE](#) section on p. 6. Confirm that the selected dockplate is in satisfactory condition before use.

Be aware of your dockplate’s load rating. Load ratings (capacities) are provided in on-product labeling as well as in the [SPECIFICATIONS](#) section on p. 2. See [LABELING DIAGRAM](#) on p. 10. Uniform capacity = maximum evenly distributed weight the dockplate can support. DO NOT exceed the load rating!

Before installing a dockplate:

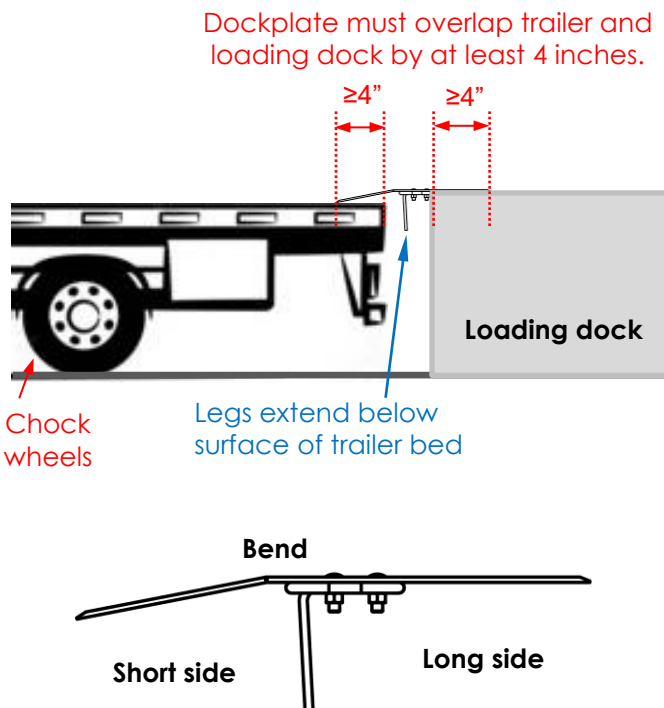
1. Immobilize the trailer with wheel chocks.
2. The surface on which the dockplate will be used must be even, level, intact concrete or similar. Asphalt is not recommended as it may compress.
3. Confirm that the dock and trailer bed are structurally sound, even, and level where the dockplate will contact them. Do not use the dockplate if either surface is unsound.
4. Ensure the height differential between the loading dock and trailer bed does not exceed the recommended limit for your dockplate. All model names include 4-digits (e.g. A-3024, AH-3024, E-3024, and EH-3024). The maximum height difference between the dock and the trailer bed depends on the final 2 digits of your model name as indicated in the following table:



	Last 2 Digits of Model Name						
	24	30	36	42	48	54	60
<b>Max. height difference (H)</b>	<b>3"</b>	<b>4"</b>	<b>5"</b>	<b>6"</b>	<b>7"</b>	<b>8"</b>	<b>9"</b>

## V. POSITIONING AND USING YOUR DOCKPLATE

1. Confirm the trailer is chocked and stable.
2. All dockplate models (A, AH, E, EH) utilize bolt-on zinc-plated legs and carrying handles. Carry the dockplate using 1 or both of the handles.
3. Position the dockplate to span the gap between your loading dock and trailer bed.
  - a. The short side of the dockplate should be placed on the *higher surface* and the longer side on the lower surface. In the diagram, the loading dock is higher than the bed of the trailer, so the short side of the dockplate rests on the loading dock. An 11-degree bend is located closer to one end of the dockplate than the other. The bend ensures that the ends of the dockplate rest solidly on the loading dock and the trailer bed.
  - b. Confirm both leg brackets extend into the gap between the dock and the trailer bed and *below the level of the lower surface* (trailer bed in the diagram). This is critical to secure the dockplate in place during use.
  - c. Confirm that both ends of the dockplate overlap the vehicle/trailer bed or the loading dock by at least 4 inches ( $\geq 4"$ ).
  - d. Confirm the stability of the dockplate before using/traversing it.
  - e. Do not use if unstable or if height differential exceeds design limits.
4. Use the dockplate to conduct loading and/or unloading operations. Beveled edges along the entry and exit edges provide smooth transitions from the loading dock surface and trailer bed onto the dockplate.
5. When loading/unloading operations are finished, and BEFORE the trailer drives away from the dock, remove the dockplate. Lift it using one or both of the handles and carry it to its designated *indoor storage location*. NOTE: An optional dockplate storage rack, [model DPR-2616](#), can be used for this purpose.



## VI. RECORD OF SATISFACTORY CONDITION

Record the condition of the dockplate before putting it into service for the first time. Include observations about all features, including handles, legs, tread plate, welds, bends, and labels. Thoroughly photograph the unit so that all features are clearly imaged. Collect all writings, recordings, and photographs in a file. This file is a Record of the unit in satisfactory condition. During all future inspections, compare the condition of your dockplate to the Record to determine if the unit is in satisfactory condition. See [INSPECTING & MAINTAINING THE DOCKPLATE](#) section below.

## VII. INSPECTING & MAINTAINING THE DOCKPLATE (ALL MODELS)

Inspections and repairs should only be performed by qualified persons. Compare the results of each inspection to the [RECORD OF SATISFACTORY CONDITION](#) (the "RECORD"). Do not use the dockplate unless all parts are in satisfactory condition. Replace parts that are not in satisfactory condition before using the dockplate again. DON'T GUESS! If you have any questions about the condition of your dockplate, speak with [TECHNICAL SERVICE](#) personnel. The phone number is provided on the cover page of this manual.

Never make temporary repairs of damaged or missing parts. Only use manufacturer-approved replacement parts.

Make a dated record of each inspection that includes a written account of your observations as well as a description of repairs made.

(A) Each day inspect the dockplate for the following conditions:

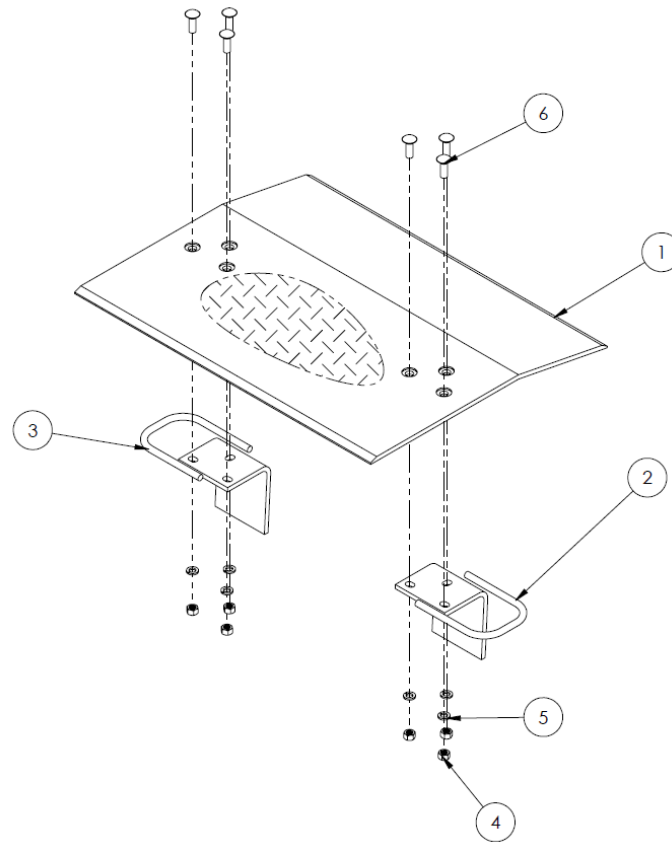
1. Visible damage to the plate, legs, or handles.
2. Secure locking of legs.
3. Slippage or instability.

(B) At least once per month, inspect the following components. DO NOT use the dockplate until it is restored to satisfactory condition.

1. Tread plate:
  - a) Inspect for wear, cracks, or other damage: If the plate is deformed or tread is worn, remove the dockplate from service and replace it.
  - b) Clean tread to maintain skid resistance.
2. Legs: Legs should be solidly fastened to the underside of the dockplate. Tighten loose fasteners. Check each leg for cracks, bends, warps, and for significant rusting/corrosion.
3. Handles: Examine for damage (breaks, cracks, etc.) or looseness. Tighten loose fasteners.
4. Fasteners/hardware: Replace damaged/worn hardware. Any time a lock nut is loosened or removed from a bolt, it must be replaced with a new lock nut.
5. Welds and bends: Check for cracks, fatigue, and significant rust/corrosion.
6. Overall structure: Ensure no deformation; plate should be flat except for a single, designed bend.
7. Labels (refer to [LABELING DIAGRAM](#) on p. 10): The dockplate should be labeled at all times as shown in the diagram. Replace any label that is damaged or not easily readable.



## EXPLODED VIEW AND BILLS OF MATERIALS: A & AH SERIES DOCK PLATES



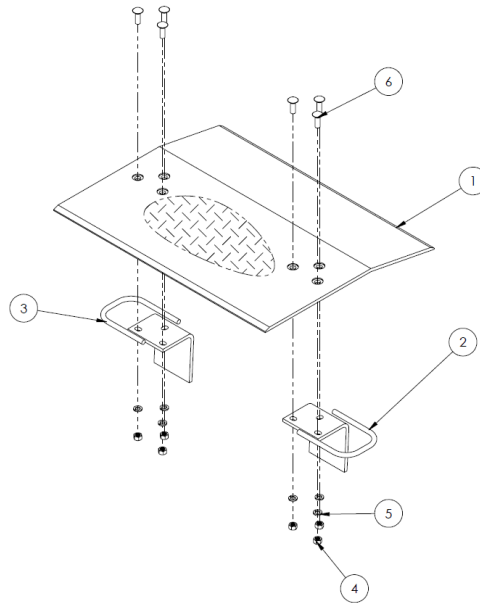
### A-series Aluminum Hand Truck Dockplates

Item	Part no.	Description	Qty.
1	12-013-104	A-3024	1
	12-013-100	A-3030	1
	12-013-101	A-3036	1
	12-013-102	A-3048	1
	12-013-105	A-3624	1
	12-013-106	A-3630	1
	12-013-119	A-3636	1
	12-013-107	A-3648	1
2	12-525-001	WELDMEN, LEG, RIGHT: A-3024; A-3030	1
	12-525-002	A-3036; A-3048	1
	12-525-001	A-3624; A-3630	1
	12-525-002	A-3636; A-3648	1
3	12-525-004	WELDMEN, LEG, LEFT: A-3024; A-3030	1
	12-525-005	A-3036; A-3048	1
	12-525-004	A-3624; A-3630	1
	12-525-005	A-3636; A-3648	1
4	36110	HEX NUT, Z-PLATED, 1/2"-13	6
5	33626	LOCK WASHER, Z-PLATED 1/2"	6
6	20268	CARRIAGE BOLT, 1/2"-13X1 1/2"	6

### AH-series Aluminum Hand Truck Dockplates

Item	Part no.	Description	Qty.
1	12-013-108	AH-3024	1
	12-013-114	AH-3030	1
	12-013-115	AH-3036	1
	12-013-116	AH-3048	1
	12-013-103	AH-3624	1
	12-013-117	AH-3630	1
	12-013-118	AH-3636	1
	12-013-109	AH-3648	1
2	12-525-001	WELDMEN, LEG, RIGHT: AH-3024; AH-3030	1
	12-525-002	AH-3036; AH-3048	1
	12-525-001	AH-3624; AH-3630	1
	12-525-002	AH-3636; AH-3648	1
3	12-525-004	WELDMEN, LEG, LEFT: AH-3024; AH-3030	1
	12-525-005	AH-3036; AH-3048	1
	12-525-004	AH-3624; AH-3630	1
	12-525-005	AH-3636; AH-3648	1
4	36110	HEX NUT, Z-PLATED, 1/2"-13	6
5	33626	LOCK WASHER, Z-PLATED 1/2"	6
6	20268	CARRIAGE BOLT, 1/2"-13X1 1/2"	6

## EXPLODED VIEW AND BILLS OF MATERIALS: E SERIES DOCK PLATES

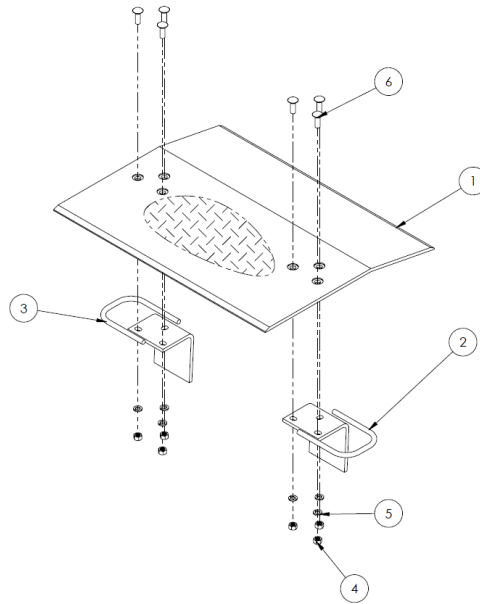


**E-series Aluminum Hand Truck Dockplates**

Item	Part no.	Description	Qty.	Item	Part no.	Description	Qty.
<b>1</b>	12-013-001	DECK, ALUMINUM, FORMED: E-3024	1	<b>1</b>	12-013-035	E-4860	1
	12-013-003	E-3030	1		12-013-037	E-5424	1
	12-013-005	E-3036	1		12-013-039	E-5430	1
	12-013-007	E-3048	1		12-013-041	E-5436	1
	12-013-009	E-3624	1		12-013-043	E-5448	1
	12-013-011	E-3630	1		12-013-045	E-5460	1
	12-013-013	E-3636	1		12-013-047	E-6024	1
	12-013-015	E-3648	1		12-013-049	E-6030	1
	12-013-017	E-4224	1		12-013-051	E-6036	1
	12-013-019	E-4230	1		12-013-053	E-6042	1
	12-013-021	E-4248	1		12-013-055	E-6048	1
	12-013-023	E-4824	1		12-013-057	E-6054	1
	12-013-025	E-4830	1		12-013-059	E-6060	1
	12-013-027	E-4836	1		12-013-061	E-7224	1
	12-013-029	E-4842	1		12-013-063	E-7230	1
	12-013-031	E-4848	1		12-013-065	E-7236	1
	12-013-033	E-4854	1		12-013-067	E-7248	1
<b>2</b>	12-525-001	WELDMENT, LEG, RIGHT: E-3024; E-3030; E-3624; E-3630; E-4224; E-4230; E4824; E-4830; E-5424 E-5430; E- 6024; E-6030; E-7224; E-7230	1				
	12-525-002	E-3036; E-3048; E-3636; E-3648; E-4248; E-4836; E-4842; E-4848; E-5436; E-5448; E-6036; E-6042; E-6048	1				
	12.525-003	E4854; E-4860; E-5460; E-6054; E-6060; E-7236; E-7248	1				
<b>3</b>	12-525-004	WELDMENT, LEG, LEFT: E-3024; E-3030; E-3624; E-3630; E-4224; E-4230; E4824; E-4830; E-5424 E-5430; E- 6024; E-6030; E-7224; E-7230	1				
	12-525-005	E-3036; E-3048; E-3636; E-3648; E-4248; E-4836; E-4842; E-4848; E-5436; E-5448; E-6036; E-6042; E-6048	1				
	12-525-006	E4854; E-4860; E-5460; E-6054; E-6060; E-7236; E-7248	1				
<b>4</b>	36110	HEX NUT, Z-PLATED, 1/2"-13	6				
<b>5</b>	33626	LOCK WASHER, Z-PLATED 1/2"	6				
<b>6</b>	20268	CARRIAGE BOLT, 1/2"-13X1 1/2"	6				



## EXPLODED VIEW AND BILLS OF MATERIALS: EH SERIES DOCK PLATES

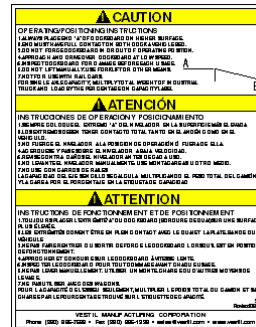
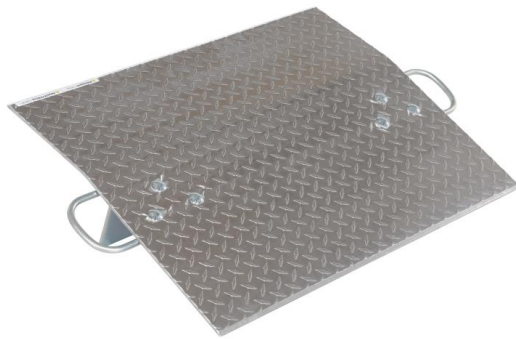


### E-series Aluminum Hand Truck Dockplates

Item	Part no.	Description	Qty.	Item	Part no.	Description	Qty.
1	12-013-002	DECK, ALUMINUM, FORMED: EH-3024	1	1	12-013-036	DECK, ALUMINUM, FORMED: EH-4860	1
	12-013-004	EH-3030	1		12-013-038	EH-5424	1
	12-013-006	EH-3036	1		12-013-040	EH-5430	1
	12-013-008	EH-3048	1		12-013-042	EH-5436	1
	12-013-010	EH-3624	1		12-013-044	EH-5448	1
	12-013-012	EH-3630	1		12-013-046	EH-5460	1
	12-013-014	EH-3636	1		12-013-048	EH-6024	1
	12-013-016	EH-3648	1		12-013-050	EH-6030	1
	12-013-018	EH-4224	1		12-013-052	EH-6036	1
	12-013-020	EH-4230	1		12-013-054	EH-6042	1
	12-013-022	EH-4248	1		12-013-056	EH-6048	1
	12-013-024	EH-4824	1		12-013-058	EH-6054	1
	12-013-026	EH-4830	1		12-013-060	EH-6060	1
	12-013-028	EH-4836	1		12-013-062	EH-7224	1
	12-013-030	EH-4842	1		12-013-064	EH-7230	1
	12-013-032	EH-4848	1		12-013-066	EH-7236	1
	12-013-034	EH-4854	1		12-013-068	EH-7248	1
2	12-525-001	WELDMENT, LEG, RIGHT: EH-3024; EH-3030; EH-3624; EH-3630; EH-4224; EH-4230; EH-4824; EH-4830; EH-5424; EH-5430; EH-6024; EH-6030; EH-7224; EH-7230	1				
	12-525-002	EH-3036; EH-3048; EH-3636; EH-3648; EH-4248; EH-4836; EH-4842; EH-4848; EH-5436; EH-5448; EH-6036; EH-6042; EH-6048; EH-7236; EH-7248	1				
	12-525-003	EH-4854; EH-4860; EH-5460; EH-6054; EH-6060; EH-7236; EH-7248	1				
3	12-525-004	WELDMENT, LEG, LEFT: EH-3024; EH-3030; EH-3624; EH-3630; EH-4224; EH-4230; EH-4824; EH-4830; EH-5424; EH-5430; EH-6024; EH-6030; EH-7224; EH-7230	1				
	12-525-005	EH-3036; EH-3048; EH-3636; EH-3648; EH-4248; EH-4836; EH-4842; EH-4848; EH-5436; EH-5448; EH-6036; EH-6042; EH-6048; EH-7236; EH-7248	1				
	12-525-006	EH-4854; EH-4860; EH-5460; EH-6054; EH-6060; EH-7236; EH-7248	1				
4	36110	HEX NUT, Z-PLATED, 1/2"-13	6				
5	33626	LOCK WASHER, Z-PLATED 1/2"	6				
6	20268	CARRIAGE BOLT, 1/2"-13X1 1/2"	6				

## VIII. LABELING DIAGRAM

Label content and location are subject to change. Your product might not be labeled exactly as shown in the diagram below. If the labels applied to your unit differ from those shown in the diagram, contact [TECHNICAL SERVICE](#) and report the inconsistency. Thoroughly photograph the unit when you first receive it as discussed in the [RECORD OF SATISFACTORY CONDITION](#) section on p. 6. Make sure that your Record includes at least 1 photograph of each label. Replace all labels that are, or later become, damaged, missing, or not easily readable (e.g. faded). To order replacement labels, contact the [TECHNICAL SERVICE & PARTS DEPARTMENT](#) online at <https://www.vestil.com/page-parts-request.php> or by calling (260) 665-7586 and asking the operator to connect you to the PARTS DEPARTMENT.



LABEL 321 – ON LEG



TAG 003 - UNDERSIDE

FORMULE TRUCKS (EN) SÉRIEL TRUCKS (EN) SÉRIEL TRUCKS (EN)	FORMULE TRUCKS (FR) SÉRIEL TRUCKS (FR) SÉRIEL TRUCKS (FR)	FORMULE TRUCKS (ES) SÉRIEL TRUCKS (ES) SÉRIEL TRUCKS (ES)
FORMULE TRUCKS (EN) SÉRIEL TRUCKS (EN) SÉRIEL TRUCKS (EN)	FORMULE TRUCKS (FR) SÉRIEL TRUCKS (FR) SÉRIEL TRUCKS (FR)	FORMULE TRUCKS (ES) SÉRIEL TRUCKS (ES) SÉRIEL TRUCKS (ES)
FORMULE TRUCKS (EN) SÉRIEL TRUCKS (EN) SÉRIEL TRUCKS (EN)	FORMULE TRUCKS (FR) SÉRIEL TRUCKS (FR) SÉRIEL TRUCKS (FR)	FORMULE TRUCKS (ES) SÉRIEL TRUCKS (ES) SÉRIEL TRUCKS (ES)

949 – FRONT LEG  
DATA FIELDS PRINTED  
IN HOUSE



## IX. LIMITED WARRANTY

Vestil Manufacturing Company ("Vestil") warrants this product to be free of defects in material and workmanship during the warranty period. Our warranty obligation is to provide a replacement for a defective, original part covered by the warranty after we receive a proper request from the Warrantee (you) for warranty service.

### Who may request service?

Only a warrantee may request service. You are a warrantee if you purchased the product from Vestil or from an authorized distributor AND Vestil has been fully paid.

### Definition of "original part"?

An original part is a part used to make the product as shipped to the Warrantee.

### What is a "proper request"?

A request for warranty service is proper if Vestil receives: 1) a photocopy of the Customer Invoice that displays the shipping date; AND 2) a written request for warranty service including your name and phone number. Send requests by one of the following methods:

<u>US Mail</u>	<u>Fax</u>	<u>Email</u>
Vestil Manufacturing Company 2999 North Wayne Street, PO Box 507 Angola, IN 46703	(260) 665-1339 <u>Phone</u> (260) 665-7586	<a href="mailto:info@vestil.com">info@vestil.com</a> Enter "Warranty service request" in subject field.

In the written request, list the parts believed to be defective and include the address where replacements should be delivered. After Vestil receives your request for warranty service, an authorized representative will contact you to determine whether your claim is covered by the warranty. Before providing warranty service, Vestil will require you to send the entire product, or just the defective part (or parts), to its facility in Angola, IN.

### What is covered under the warranty?

The warranty covers defects in the following original, dynamic parts: motors, hydraulic pumps, motor controllers, and cylinders. It also covers defects in original parts that wear under normal usage conditions ("wearing parts"), such as bearings, hoses, wheels, seals, brushes, and batteries.

### How long is the warranty period?

The warranty period for original dynamic components is 90 days. For wearing parts, the warranty period is 90 days. Both warranty periods begin on the date Vestil ships the product to the Warrantee. If the product was purchased from an authorized distributor, the periods begin when the distributor ships the product. Vestil may, at its sole discretion, extend a warranty period for products shipped from authorized distributors by up to 30 days to account for shipping time.

### If a defective part is covered by the warranty, what will Vestil do to correct the problem?

Vestil will provide an appropriate replacement for any *covered* part. An authorized representative of Vestil will contact you to discuss your claim.

### What is not covered by the warranty?

The Warrantee (you) are responsible for paying labor costs and freight costs to return the product to Vestil for warranty service.

### Events that automatically void this Limited Warranty.

- Misuse;
- Negligent assembly, installation, operation or repair;
- Installation/use in corrosive environments;
- Inadequate or improper maintenance;
- Damage sustained during shipping;
- Collisions or other accidents that damage the product;
- Unauthorized modifications: Do not modify the product IN ANY WAY without first receiving written authorization from Vestil.

### Do any other warranties apply to the product?

Vestil Manufacturing Co. makes no other express warranties. All implied warranties are disclaimed to the extent allowed by law. Any implied warranty not disclaimed is limited in scope to the terms of this Limited Warranty. Vestil makes no warranty or representation that this product complies with any state or local design, performance, or safety code or standard. Noncompliance with any such code or standard is not a defect in material or workmanship.